



Quick Start Guide EN

AG400011



HOME ALARM SYSTEM

WITH SMARTPHONE APP & DIALER

Home is not a place, it's a feeling



ELRO Europe
Postbus 9607 - Box E800
1006 GC Amsterdam
The Netherlands



GUARANTEE
www.elro.eu

V3

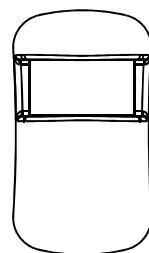
Symbols: Recycling and disposal: The WEEE symbol means that this product and batteries must be disposed separately from other household waste. When it reaches its end of life, take it to a designated waste collection point in your area to guarantee a safe disposal or recycling. Protect the environment, human health and natural resources!



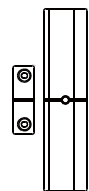
AG400011 HOME ALARM – Quick Start Guide



AG4000 Alarm panel



AG40PR11A
PIR Motion sensor



AG40MA11A
door/window
contact



AG40RE11
Remote

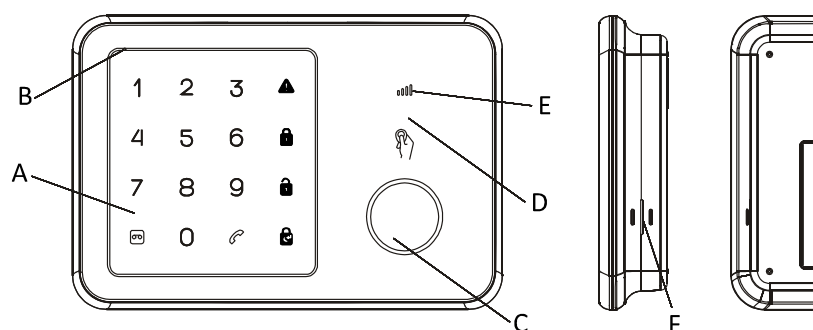


AG40TA13 Alarm Tags

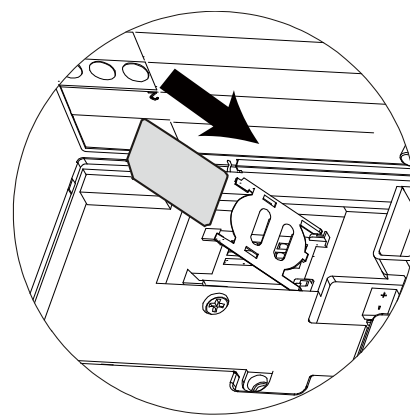
Congratulations on your purchase of the ELRO AG400011 Home Alarm system. You have just purchased one of the most advanced and feature-rich wireless security systems on the market today.

This quick start guide describes how to install your security system (alarm panel, remote, door/window contact, PIR motion sensor, and RFID Alarm Tags). For a full explanation of all the functions of the system, you can consult the full manual at www.elro.eu.

ALARM PANEL OVERVIEW



- A. Touch keypad
- B. Microphone
- C. Siren
- D. RFID sensor area
- E. GSM status led
- F. Speaker



Step 1 – Power on and SIM Card Installation

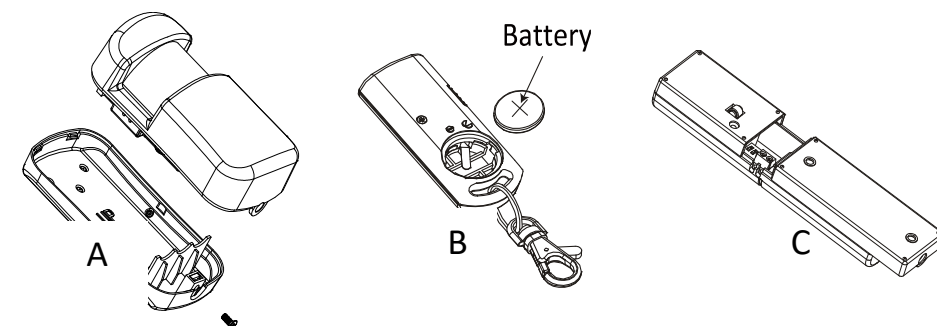
1. Remove the battery cover of the alarm panel.
2. Insert a SIM card into the slot and connect the Li-ion cell 2000mAh 3.7V and the 9V power adapter.

Note: The SIM card must be unlocked before use. You can use a mobile phone to cancel the input of a PIN code or PUK code.

3. Wait until the GSM status LED blinks slowly (once every 3 seconds) indicating that the SIM card is ready for use.

Step 2 – Insert the batteries

1. Install batteries in the included accessories.
2. Open the PIR motion sensor's rear cover and insert the 3 included AA batteries. (Figure A)
3. Twist open the battery cover of the remote control using a coin and insert the coin cell battery inside. (Figure B). Replace the cover and press any key to ensure the red LED on the remote lights up.
4. Open the door/window contact battery cover and insert the 3 included AAA batteries. (Figure C)



Step 3 – Setting up the GSM host number

1. Make a new contact in your phone's address book for the alarm panel (for instance called 'Home Alarm'), and input the number of the SIM card that you placed in the alarm panel.
2. To program your phone number in the alarm panel, follow these steps:



(example: 1234 + 66 + + 09 5555 1212 +)

3. You will receive an SMS message saying the phone number was set successfully.
4. Your alarm panel can now be controlled from your phone via app and SMS (Step 9).

Step 4 – Record an alert voice message


1. The alarm panel's built-in microphone can record your message.
On the alarm panel enter the following:

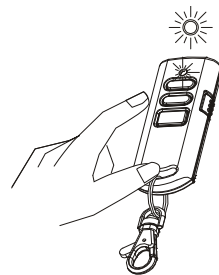


2. When the record button flashes green, speak into the alarm panel's microphone to record a brief alarm message. The maximum length of the message is 10 seconds.
3. When the light stops flashing, the panel will play back the alert message.

Step 5 – Test the remote control (SR401)

Note: Included accessories are pre-binded with the alarm panel at the factory and ready for use.

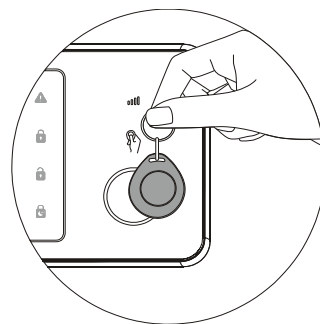
1. Test the communication link by pressing disarm  on the remote
2. The red indicator on the remote should light up, and the alarm panel should sound a long beep.



Important: If the siren goes off at any point during the setup, press the Disarm button on the remote to immediately turn off the siren

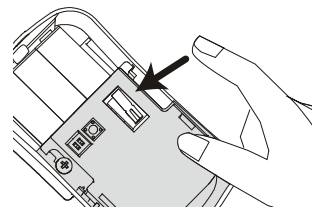
Step 6 – Test the RFID key tag


1. RFID tags can be used to disarm the system.
2. Arm the system using the remote control, ensure that the ARM icon lights up.
3. Hold the RFID tag near the panel in front of the small hand icon after arming the system.
4. You should hear a long beep and the disarm indicator should light up.
5. Several RFID tags can be added and each can have a different number.



Step 7 – Testing the PIR motion sensor (SP831)

1. Put the alarm panel in test mode by inputting:

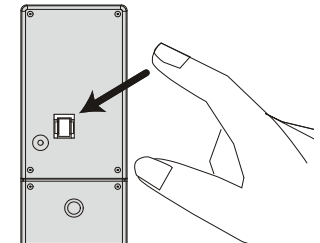


The disarmed  icon will flash when in this mode.

2. Press and release the tamper switch inside the PIR motion sensor (pictured on the right) until the alarm panel makes a chime sound.
3. Place the rear cover back on the PIR motion sensor.

Step 8 – Test the door / window contact (SM831)

1. Leave the system in test mode.
2. Press and release the tamper switch on the back of the sensor until the alarm panel makes a chime sound.



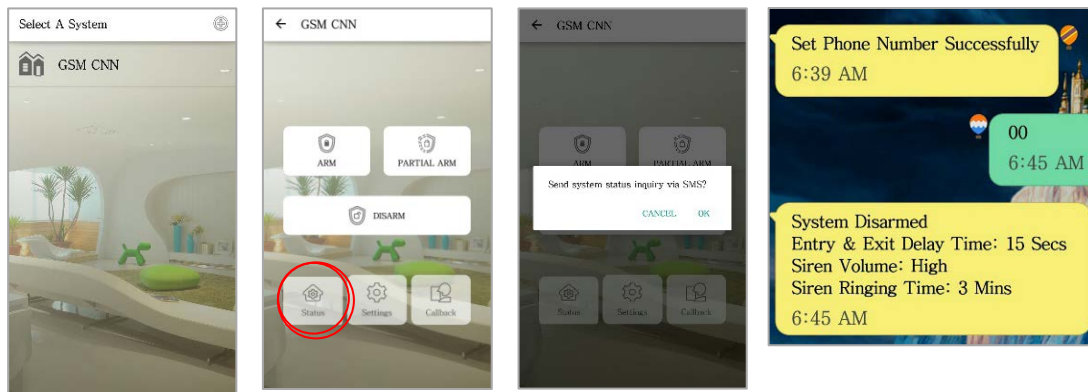
Step 9 – Smartphone app Setup

With the "ELRO Home Alarm" app you can remotely access the ELRO Home alarm system from your smartphone. You can easily disarm and (partially) arm your alarm system, and receive alert messages on your smartphone when emergencies occur.



Important: Make sure you're installing the app on the same phone you used in Step 2.

1. On the Google Play Store or Apple App Store, search for "ELRO Home Alarm" and install the app.
2. Add a new system and choose a name, then enter the phone number belonging to the SIM card you have inserted into the alarm panel.
3. Select the newly created system from the home screen (Image D below)
4. Then click on the status button to request the current status of the system. (Image E below)
5. A pop-up will appear asking to send an SMS to request the current system status. Select ok. (Image F below)
6. An SMS with the system status will be sent to your phone. (Image G below)



D

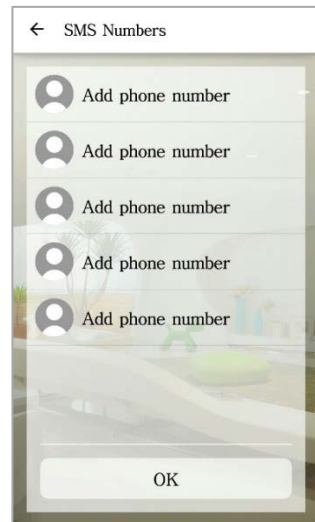
E

F

G

Step 10 – Adding numbers for Alarm notification

1. In the app go to settings, then select alerts.
2. Select the type of notification number you want to add, then click one of the fields saying 'add phone number' to add a number.
3. In the field that pops up you can type the phone number you want to add, and by clicking the picture with a plus in the middle you can also add a picture for that number.



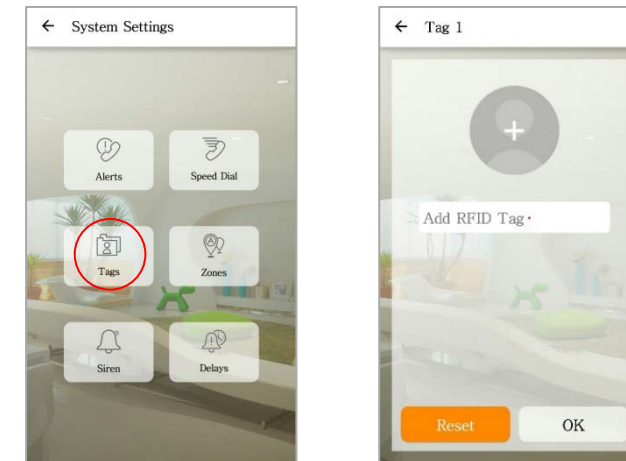
Note: Adding a contact into the SMS list will also enable that contact to have limited access of the GSM panel using the App.

They can Arm/Partial Arm/Disarm the system but do not have access to other settings.

Step 11 – Customize RFID and Zone names

1. To customize RFID tag names, go to settings in the app, then select tags.
2. Select the tag that you wish to customize.
3. Input a name for the tag in the field that pops up. By clicking the picture above the text field, you can also assign a picture to this tag.

4. An SMS will be sent to notify you when the name has been successfully changed.



5. In the settings menu of the app, select zones to rename security accessories
6. Rename the zones to indicate the device location and purpose, for example "Main door".
7. If the change is successful, the user will receive an SMS confirmation.



Step 12 – Change Default PIN code

We **STRONGLY** advise changing the default system PIN code to prevent any unauthorized access to your alarm panel.

1. To do so, on the alarm panel enter:



2. After hearing the beep, enter a new 4-digit PIN code +



3. To make sure the new PIN code has been changed, try to arm the system.



4. The system should arm successfully using the new PIN code.





Step 13 – Final test before mounting the system

Perform a quick test after the system has been set up and configured.

1. First disarm the system using the app
2. Re-arm the system using the app
3. Trigger an alarm using the PIR and door/window detector.
4. Use the remote control to turn off the alarm once it has been triggered.
5. Check the notifications to ensure that they are correct.

Note: To conserve its battery life, the PIR Motion sensor can be triggered only once every 2 minutes.

Daily operations from alarm panel:

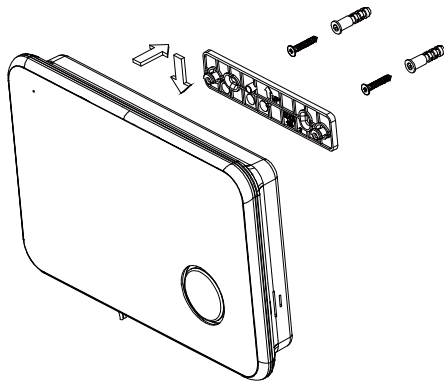
| Function | Button Icon | Remark | Action |
|----------|---|-------------------------------------|---|
| Arm |  | Activates the alarm for monitoring. | Enter (PIN code) +  |
| Disarm |  | Deactivates the alarm. | Enter (PIN code) +  |

Step 14 – Mounting the system

Alarm Panel

Selecting a suitable location:

- Mount the alarm panel close to the door which you normally use to enter/exit your house.
- Note that the alarm panel requires a power outlet to function properly.
- Ensure the location selected has good GSM reception. You can do this by cross checking the signal bar on your phone at that location.
- The panel must not be located or operated in conjunction with any other nearby transmitter or antenna.

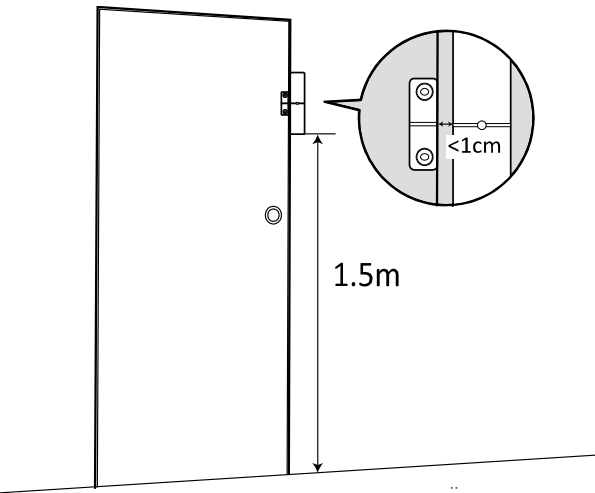


1. Remove the back panel mounting bracket of the alarm panel and mount the bracket on the wall using wall anchors and screws.
2. Once secured, ensure the power is connected and reattach the alarm panel to the secured mounting bracket.

Door/Window contact

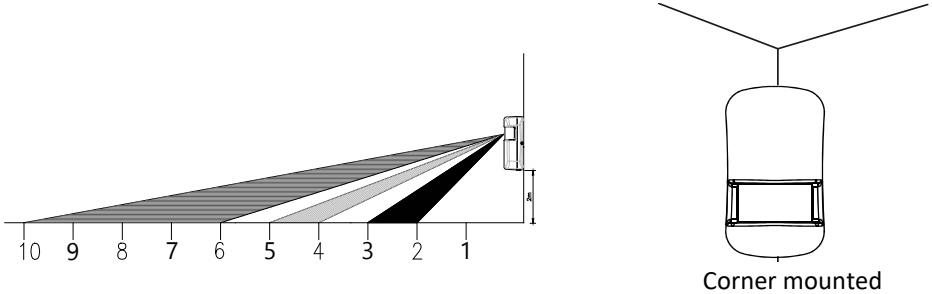
If possible, locate sensors within 100 ft. (30m) of the panel. While a transmitter may have a range of 350 ft. (106 m) or more out in the open, the environment at the installation site can have a significant effect on transmitter range

1. Mount the sensor on the door frame and the magnet on the door. If the sensor is used on double doors, mount the sensor on the least-used door and the magnet on the most-used door.
2. Place sensors at least (1.5 m) above the floor to ensure the best transmission range.
3. Make sure the alignment arrow on the magnet points to the alignment mark on the sensor.
4. Avoid mounting sensors in areas where they will be exposed to moisture or high temperatures.
5. Use spacers (not included) to keep sensors and magnets away from metal or metallic surfaces such as foil wallpaper.

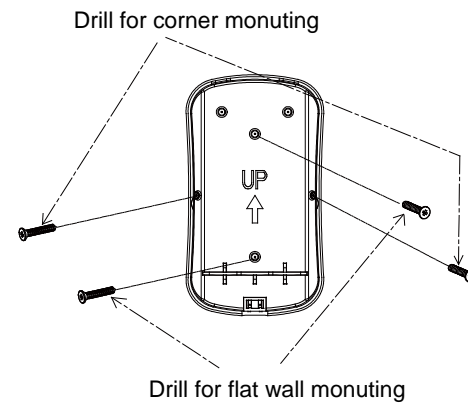


PIR Motion Sensor

The recommended position for a PIR Detector is in the corner of a room mounted at a height between 1.8 and 2m. At this height, the detector will have a range of up to 10m with a field of view of 110° (see figure below). Keep sensors within 30 m (100 ft) of the alarm panel.



1. Fix the motion sensor to the wall by using the adhesive tape provided.
2. If you need to drill it on the wall, remove the rear cover and drill through the rear cover. Drill guides are provide for flat mount or corner mount (see below)



3. Once the back cover is secured reattach the main body of the sensor to the back cover.

Home is not a place, it's a feeling

We hope you'll enjoy your purchase and the safety and comfort that comes with your ELRO Alarm System. We pay close attention to the quality of our products. In addition, we find an easy installation and user convenience very important. We are aware that there will always be things we can improve. You can tell us better than anyone what we can improve. Therefore, we would love to hear about your product experience, from installation to daily use of your alarm system. Please visit www.elro.eu and give your opinion on our ELRO Alarm Systems. Your feedback is very welcome. On our website, you'll also find an overview of compatible accessories and other ELRO security and comfort products that ensure an easier and safer way of living.

**We wish you a safe & happy home,
Ad Daamen,
CEO, ELRO Europe**