

Safety Instructions

1. Keep the indoor unit away from high temperature such as near an oven or under direct sunlight, and high humidity such as bathroom and greenhouse
2. Do not install the indoor unit close to a television or position with strong jamming- the signals the TV and the intercom use can be interfered with each other
3. Do not touch the unit with wet hands.
4. Avoid throwing, dropping or hitting the units
5. Clean the camera or screen with a soft cloth. Do not use detergent, thinner, volatile or corrosive liquid
6. Do not expose the camera of the outdoor unit to direct sunlight
7. Use the product under the circumstance of barrier-free and no interference
8. When a car or a motorbike passes by, the image may become blurred or be cut off due to the interference of radio wave

Caution:

1. To prevent damage, the adapter should be fastened on the wall according to instruction
2. You should keep the power plug in an accessible location in case the unit needs to be disconnected.

Symbols:

Recycling and disposal: The WEEE symbol (a) means that this product and batteries must be disposed separately from other household waste. When it reaches its end of life, take it to a designated waste collection point in your area to guarantee a safe disposal or recycling. Protect the environment, human health and natural resources! Read the manual (b) before use and store it in a safe place for future use and maintenance.

ELRO Europe | www.elro.eu
Postbus 9607 - Box E800
1006 GC Amsterdam - The Netherlands



GUARANTEE
Visit www.elro.eu



Manual EN

DVC040IP



IP VIDEO DOORBELL WITH WIRELESS DOOR CHIME

Home is not a place, it's a feeling

IP Video Intercom System over APP

Congratulations on the purchase of your new ELRO Video Intercom, featuring night view, WiFi connectivity, an outdoor unit with nameplate and a wireless battery operated door chime.

We want you to be able to use this ELRO product without having to read an extensive guide, so this user manual will help you to get started, make the outdoor unit and wireless chime work together and indicate the most important features. You will also learn which app you have to use for remote access.

If you need more detailed information, there is an extensive explanation of all features inside the app, or you can visit our website www.elro.eu for a service hotline and more details.

Product description and features

This ELRO IP Video Intercom enables you to remotely view who rings your door bell, even if you are not at home. It has an aluminium finished outdoor unit with a protective rainshade for surface wall mounting. The 1 MP CMOS camera with 100° view angle comes with 6 IR LEDs for night view and the unit also includes a lit nameplate.

Once somebody rings the intercom, the battery operated door chime will ring to indicate a visitor, not relying on a WiFi or LAN connection to your router, but via a 433 MHz wireless RF transmission.

Additionally, you can connect this outdoor unit to your router at home by LAN cable or WiFi and it can then send a call to the ELRO Intercom Smartphone app, that you can find in the Apple App Store or Google Play Store. The app allows you to see direct video of the visitor and communicate with them via 2-way audio.

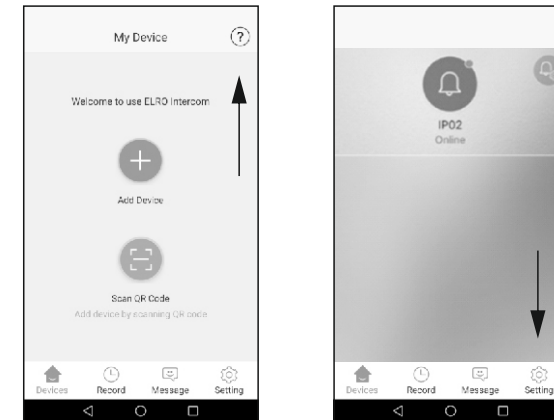
You can save pictures or video from the app on your smartphone and even activate the door lock at your home (for both electric and magnetic door locks).

The wireless door chime has 8 different sounds to choose from and is operated by 3 x AA batteries (not included). It also has a blue LED light to indicate visitors in case of hearing impairment or if you are otherwise unable to hear the chime. There is also an on/off switch if you don't want to be disturbed.

Besides the mounting materials (dowels and screws) and user manual, the set contains the following parts:

App Settings

The ELRO Intercom App is designed for use with the ELRO DVC040WIP and ELRO DV447WIP. Inside the app, when you have not added any device, you will find a question mark icon in the upper right corner. If you have already added a device, go to settings to find a question mark icon labelled "Help":



Specifications

Outdoor unit

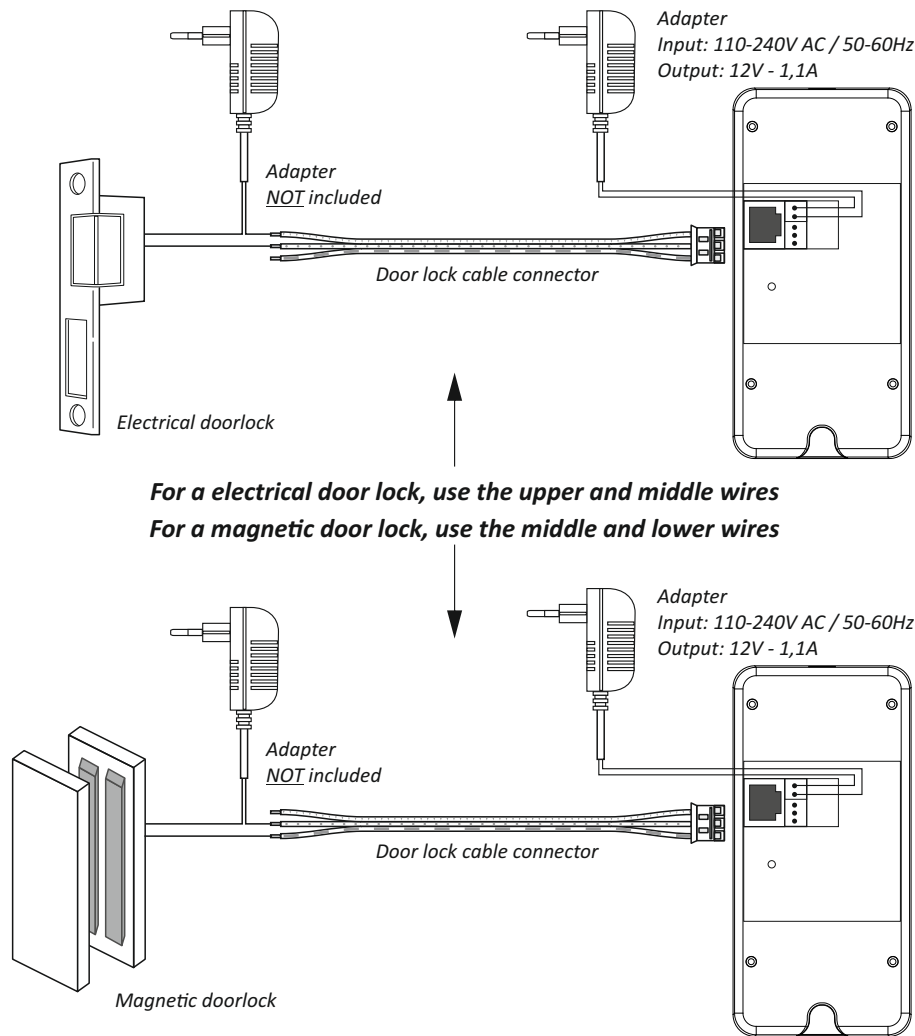
Camera Sensor	: 1 MP CMOS
Camera angle	: 100°
Power supply	: 12 V DC; 1000 ,A
Night view	: 6 x IR LEDs, ca. 2 meter
Number of users	: Max. 4 users simultaneously
WiFi	: 2,4 GHz only; WPA/WPA2
Dimensions	: 163 x 85 x 62 mm
Nameplate	: Yes

Wireless door chime

Battery	: 3 x 1,5V DC; AA type
Standby current	: Max. 0,25 mA
Working current	: Max. 0,75 mA
Volume	: Max. 85dB
Wireless frequency	: 433,92 MHz
Open range distance	: ca. 80 m
Dimensions	: 85 x 85 x 26 mm
No. Of melodies	: 8

Adding a door lock

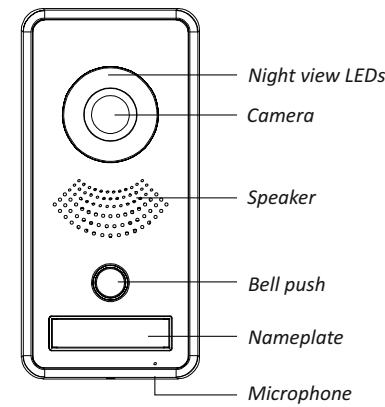
Through the ELRO Intercom app, you can remotely operate a door lock. Please note that a door lock will usually need separate power supply; check the door lock manual or inquire with an electrician. To wire an electrical door lock (which is more common than a magnetic lock), use the upper 2 wires. Plug the short 3-wire cable into the corresponding back-slot of the outdoor unit.



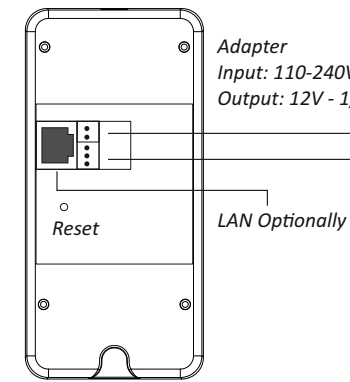
For a electrical door lock, use the upper and middle wires
For a magnetic door lock, use the middle and lower wires

Note:
Please verify carefully whether you want others to enter your home, even if you are not at home. Be aware of the risks involved in letting others in.

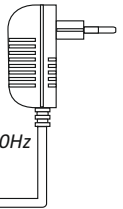
Outdoor unit frontside



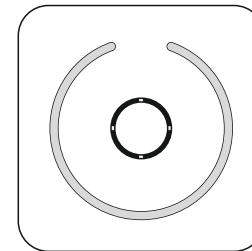
Outdoor unit backside



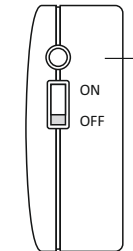
Adapter



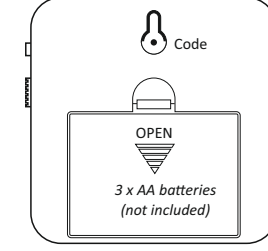
Wireless Chime frontside



sideview

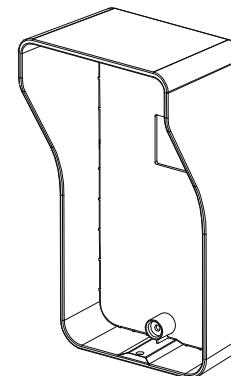


backside



Melody choice

Rainshade



Door lock cable connector

Install your IP video doorphone

A: Ring to app

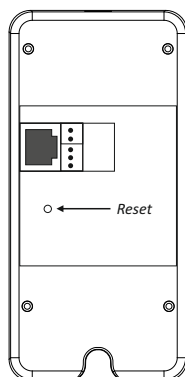
1. Download the ELRO Intercom app from the Google Play Store for Android devices or from the Apple App Store for iPhones.
2. Place the outdoor unit next to your home router and make sure that your mobile phone and the outdoor unit are using the same WiFi network. Wait until the colored ring around the push button turns blue.



3. Open the app and press the “+” button to add the new device. Follow the “Smart Konfig” instructions in the app. Ensure you have your WiFi password available.

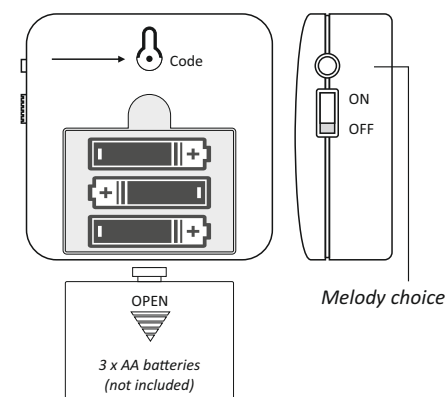
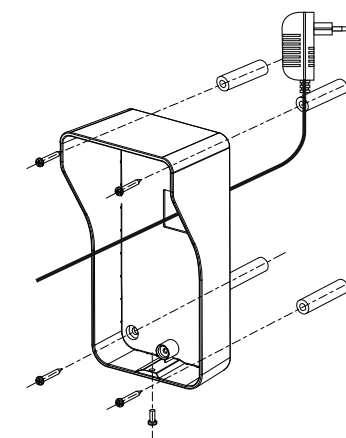
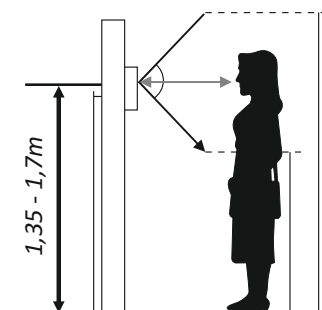


4. If pairing fails, return the outdoor unit to factory settings by pushing a needle into the small hole at the back, approx. 1cm below the LAN adapter and hold it for 3 seconds; then try again.
5. You are now ready to receive calls from your door intercom on your mobile phone, both when connected to your home WiFi network and when connected to the internet elsewhere.



B: Mounting the devices

6. Take the rainshade and use it to mark the drilling holes on your wall. Make sure that you can reach this place from the back with the power adapter cable and optionally with the door lock cable and LAN cable. We recommend a mounting height between 1,35 and 1,70 meters. Try to avoid sunlight and direct rain as much as possible.
7. Put the power adapter cable through the rectangular hole in the rainshade and fix the rainshade with the screws and dowels supplied with the set; take out the name plate paper, note your name and put it back in.
8. Connect the power cable to the outdoor unit (and optionally the LAN cable and doorlock cable), put the outdoor unit into the rainshade and fix it with the inbus screw.
9. Insert 3 x AA batteries (not included) into the wireless door chime unit and press the push button of your outdoor unit. If the chime does not ring immediately, press and hold the code-button (clearly marked with “code”) at the back of the chime for 2 seconds. Then touch the ring button of the outdoor unit and the 2 devices will be paired.
10. By pushing the melody sign on the side of the door chime, you can select between 8 different sounds. Just stop pushing the button when your desired sound plays and it will be selected and saved.



C: Multiple users

11. Optional: If more users want to access this door phone on their own mobile phones, they just need to download the app and add a device through QR Code. To do this go to device settings/QR Code and let them scan your specific device QR code from your app.