



MANUAL EN

AG40RE11

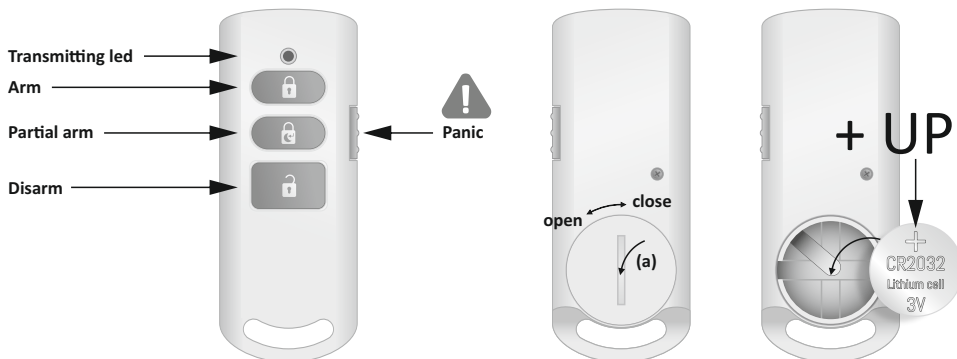


REMOTE

Home is not a place, it's a feeling

INTRODUCTION







The remote control AG40RE11 is designed for use in combination with the Home Alarm System AG400011. With the remote control you can turn your alarm system on, partially on and off. In case of an emergency you can give a panic alarm. If you press the panic button on the remote control, the alarm system will immediately sound an alarm, regardless of whether the system is on, partially on or off. When the system is in test mode, no alarm will sound.



INSERTING THE BATTERY

Unscrew the battery cover with a coin (a) and insert the supplied 3V (CR2032) battery with the "+" facing up. When you press buttons the transmitting led lights up, if it flashes instead of lighting it means the battery is low and should be replaced as soon as possible.

LINKING TO THE HOME ALARM SYSTEM AG400011

1. On the alarm panel, enter your pin +  disarm key to disarm the system.
2. Then enter your pin + 15 +  alarm to start the linking process.
The  disarm led will start to blink for 30 seconds with a beep tone.
3. Press the  alarm off button on the remote control within 30 seconds
4. To confirm, the  alarm off led on the alarm panel will illuminate for 1 second and the gives a beep signal.
5. To exit the linking process, press the  alarm off button on the alarm panel

TESTING THE REMOTE CONTROL

Testing the operation of the remote control is done by turning the alarm system on and off by using the remote control. Also test the panic button.

SPECIFICATIONS

Battery: 3V Lithium CR2032

Frequency: 868 MHz

Range: Min.100m in open air

Measurements: 77 x 31 x 13 mm

For more information about the HOME ALARM SYSTEM AG400011 visit www.elro.eu

IMPORTANT WARNING:

This package can contain small parts and/or materials which can be dangerous to small children! Be aware of this, and keep this away from small children!

Symbols:

Recycling and disposal: The WEEE symbol (a) means that this product and batteries must be disposed separately from other household waste. When it reaches its end of life, take it to a designated waste collection point in your area to guarantee a safe disposal or recycling. Protect the environment, human health and natural resources! Read the manual (b) before use and store it in a safe place for future use and maintenance.