



K2 CONNECTOR

YOUR LINK TO THE ELRO CONNECTS APP

SF50GA

Home is not a place, it's a feeling

Inhoud

Introduction SMART HOME - 3 -

1. Register an account and connect the K2 to the app - 4 -

1.1 Connect the K2 to your Wi-Fi network - 4 -

1.2 LED indication - 5 -

1.3 Installation failed..... - 5 -

1.4 Installation tips..... - 5 -

2. Adding accessories to the app..... - 6 -

3. How does smart fire protection work? - 6 -

3.1 Weekly test notification..... - 6 -

3.2 Testing via the detectors (interconnection) - 7 -

4. How does it work with smart devices? - 7 -

4. Scènes/Automation..... - 9 -

4.1 Create your own scene in the app..... - 9 -

4.2 Creating an automation..... - 9 -

4.3 Deleting a created scene in the app - 11 -

4.4 Delete an automation..... - 11 -

5. Automatic scene switching - 11 -

6. Definitions & symbols..... - 13 -

7. Adding multiple users..... - 14 -

8. Room management - 14 -

9. Resetting the K2 Connector - 14 -

10. FAQ..... - 15 -

11. Specifications - 16 -

12. Service and contact - 16 -

Introduction SMART HOME

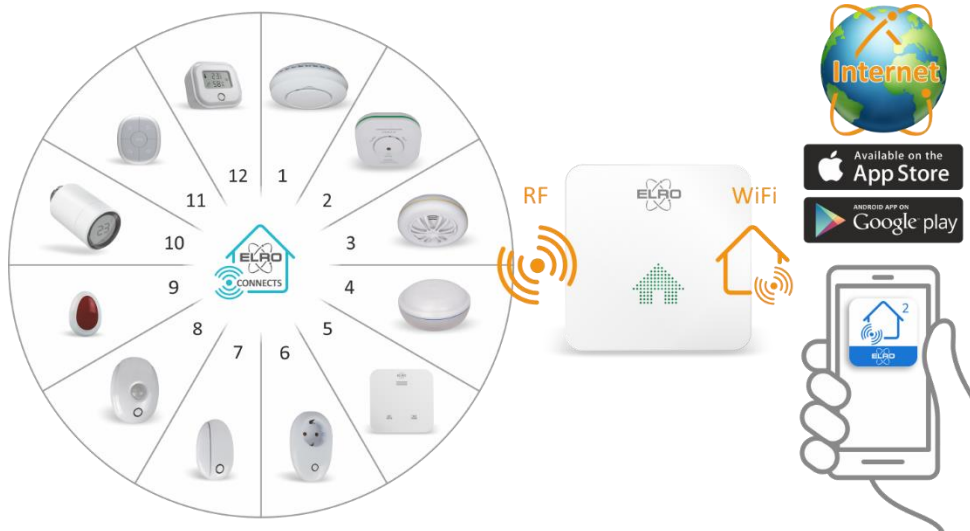
ELRO Connects 2.0 is the way to connect smart devices in and around your home. You can automate manual processes, think of switching lights and electrical appliances. Monitor the temperature and humidity in your home, but ELRO Connects also offers useful products in the field of home security. Window and door contacts and motion detectors at burglary-sensitive locations in your home, uninvited guests can no longer surprise you. Fire protection such as smoke and heat detectors but also a carbon monoxide detector and even a carbon dioxide (CO₂) monitor can be included in the app.

Smart Fire Protection

- | | | |
|---|----------|--------------------------|
| 1 | FZ5002R | Smoke detector |
| 2 | FC4801R | Carbon monoxide detector |
| 3 | FH3801R | Heat detector |
| 4 | FCO2400R | CO ₂ Monitor |
| 5 | FW3801R | Water detector |

Smart devices

- | | | |
|----|---------|--------------------------------------|
| 6 | SF40PLE | Plug-in Switch (French plug SF40PLF) |
| 7 | SF40MA | Window-door contact |
| 8 | SF40PR | Motion detector |
| 9 | SF40SS | Panik button |
| 10 | SF40RV | Radiator valve |
| 11 | SF40RE | Multifunctional Remote |
| 12 | SF40TH | Temperature- and humidity monitor |



1. Register an account and connect the K2 to the app

Your smartphone must be connected to the same network (2.4GHz) you want to connect the K2 to. Download the ELRO Connects 2.0 app on your smartphone and create an account via "Sign up>":

- Enter your "e-mail address" and request a verification code.
- Through the mail you will receive the "Verification code" via cloud_intelligence@service.aliyun.com type this code, the code will remain active for 20 minutes.
- Create a password.
- Accept "Privacy policy" and "Service agreement".
- Press next, your account is registered.



ELRO Connects 2.0

ELRO Connects app

The login screen of the ELRO Connects app. It features the app logo at the top, followed by input fields for 'E-mail' and 'Password'. There is a 'Remember password' checkbox and a 'Login' button. A large blue arrow points down to a 'Sign Up >' link at the bottom right.

Sign Up Android

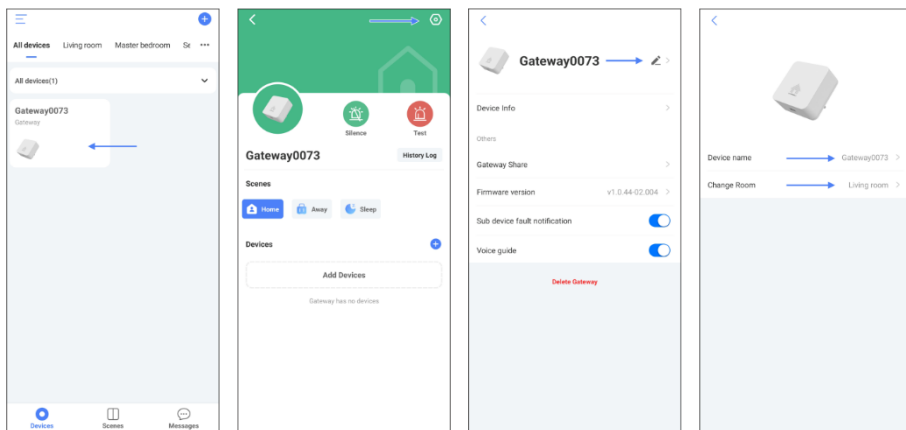
The 'Sign up & send to request' screen for Android. It has input fields for 'Mail address' and 'Verification Code'. Below these is a 'Set password' section with a 'Create a password' field and a password requirement note: 'The password must consist of 6-20 letters, upper and lower case letters, numbers and special characters'. A callout bubble shows a 'Password sample Mary#SF50GA11!'. At the bottom are links for 'Privacy policy' and 'Service agreement', and a 'Next' button.

Sign Up iPhone

The 'Sign up & send to request' screen for iPhone. It includes input fields for 'Your email address', 'Verification code', and 'Create a password'. A callout bubble shows a 'Password sample Mary#SF50GA11!'. Below the password field is a note: 'The password must consist of 6-20 letters, upper and lower case letters, numbers and special characters'. At the bottom is a 'CREATE YOUR ACCOUNT' button and a checkbox for agreeing to terms.

1.1 Connect the K2 to your Wi-Fi network

- You can add the K2 by pressing "Add devices" or the plus sign at the top right of the app.
- Plug the K2 into an outlet within range of your Wi-Fi network.
- The K2 will automatically enter connection mode. This can be recognised by the blue flashing LED. If not, press the button on the top of the K2 for 5 seconds until the blue LED flashes.
- Now click "NEXT", your network will be automatically found and displayed, enter your network's password and click "NEXT".
- The K2 will send a voice message when the connection is successful.
- You can now change the K2's name (Gateway0073, see below) and location to the room where you placed it. If your room is missing from the list you can create one yourself.



1.2 LED indication

Yellow : Flashes 3 times or is on continuously, the K2 Connector is not connected or cannot connect to your Wi-Fi.

Green : Flashes 3 times and then on, the K2 is connected to your Wi-Fi.

Green : Blinks per second, accessories can be added.

Green : On is Home scene.

Blue : Blinks per second, the K2 is ready to connect to your Wi-Fi.

Blue : On is Away scene.

Purple : On is Sleep scene.

Red : Flashes every 2 seconds, indicates alarm of devices.

Red : Flashes every 5 seconds, indicates unread alarm messages.

1.3 Installation failed

1. Unplug the connector and wait 10 seconds.
2. Press and hold the connector button until a sound is heard.
3. Insert the connector back into the socket and go through the installation again, keeping in mind the installation tips below.

1.4 Installation tips

- Make sure the **2.4GHz** network is selected on the smartphone.
- Wi-Fi name and password do not contain spaces.
- Give permission for all permissions requested.
- Does the connector flash blue when going through the installation?
- Are you sure the password is correct? Click the eyelet for verification.
- Make sure the **2.4GHz** signal is Wi-Fi 4 or lower (802.11n).
- If the above does not cause the problem, it could be that the Wi-Fi network consists of a combined signal of both 2.4 and 5GHz. By logging in to the router, the 5GHz signal can be temporarily disabled before installation. After installation, this signal can be enabled again. If you don't know how to do this, you can contact your internet service provider. They can easily enable this signal remotely for you.

2. Adding accessories to the app

It is possible to add accessories to the system using the following procedure.

1. Press the plus sign in the top right corner of the device list.
2. Select the accessory you want to add.
3. Press the accessory button three times (quickly).
4. The accessory is added.

3. How does smart fire protection work?

These products are continuously active, you cannot turn them **OFF**. Go to the devices page, tap the plus (+), the device list opens, find the device you want to pair and follow the instructions in the app.

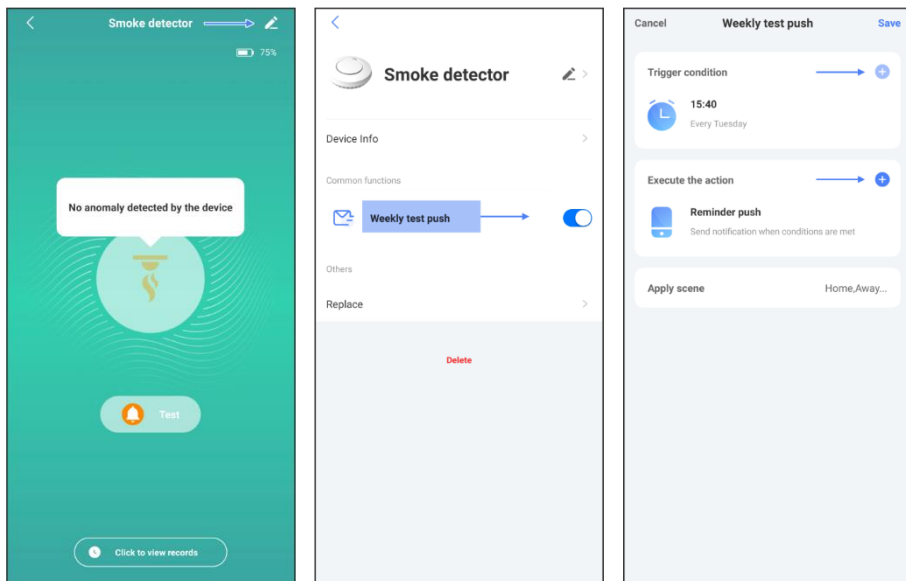
Note:

The water detector lets itself be paired differently this is because there is no test/pair button on the device. We recommend performing it with metal scissors. The 2 metal sensors on the bottom must be tapped 3 times simultaneously. Repeated quick tapping of the 2 sensors simultaneously with a metal object is the quickest way to pair the water detector. Make sure that one of the contacts remains connected to the metal object. Then use a lever movement to connect the second contact. If this does not work, try by making the lever movement faster.

3.1 Weekly test notification

If the detector is triggered, you will get a notification on your smartphone and the K2 connector will give a warning alarm. If the detector malfunctions you will receive a notification on your smartphone.

- Weekly test notification: you can program the time and day of the week when you want to receive the notification via your smartphone, you can turn this feature on and off as required.
 - Go to the devices page and select the smoke detector, for example. Then press the pencil at the top right, you will then enter the general functions of the smoke detector.

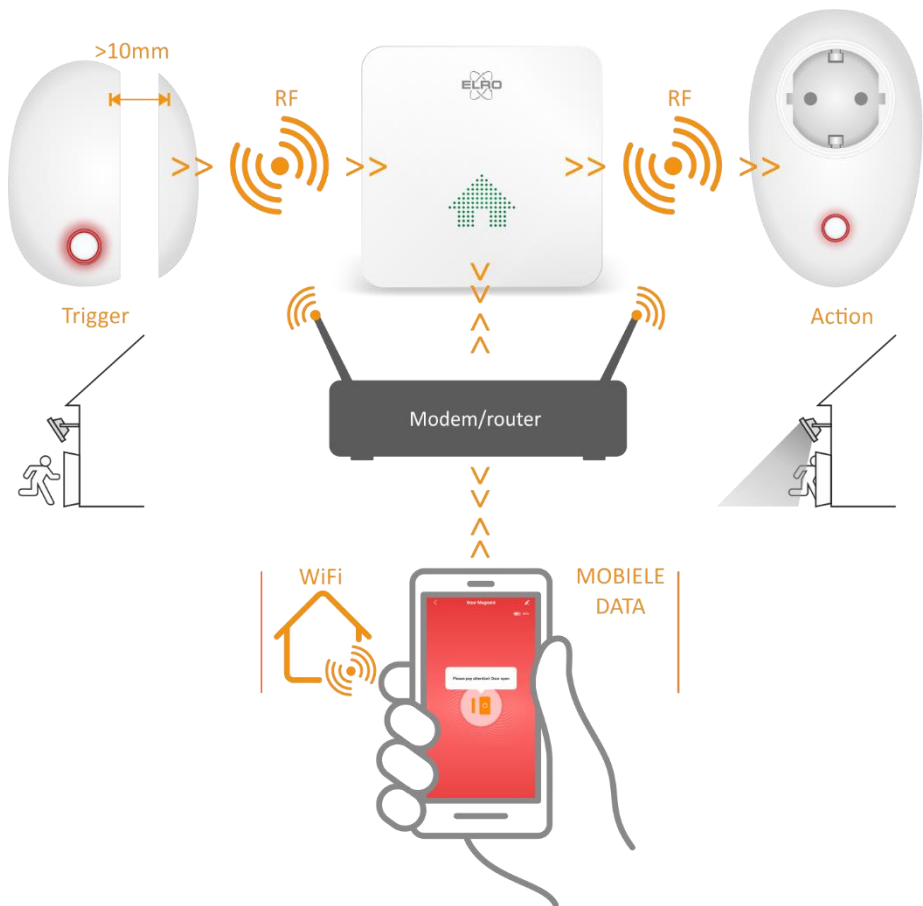


3.2 Testing via the detectors (interconnection)

You can test through the detectors themselves by pressing the test button. As a result, each of them sounds the test signal, you get a notification in the app and the test is recorded in the alarm log. This can be found via the message window.

4. How does it work with smart devices?

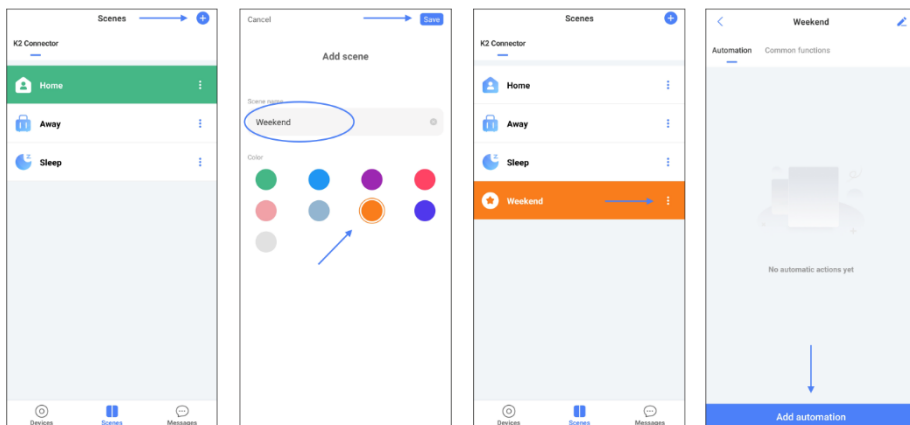
If an ELRO Connects device is *triggered then you can attach an action to it. To give you an example, the window-door contact (the trigger) is broken. You are then notified via the app and the plug-in switch turns on (an action) lights connected to it. *Trigger = set in motion.



4. Scènes/Automation

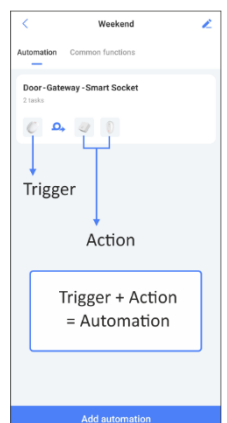
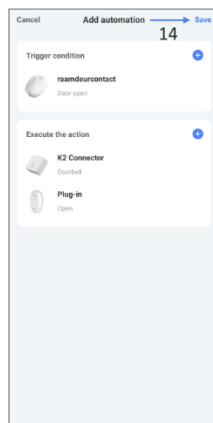
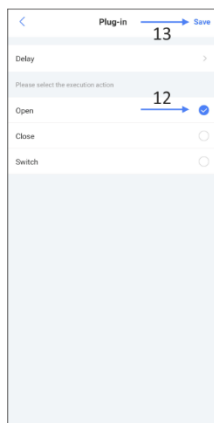
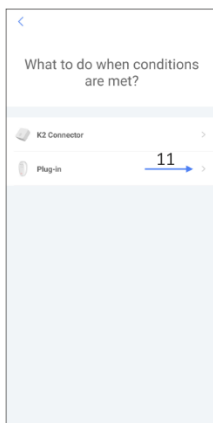
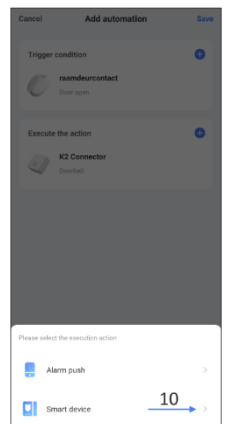
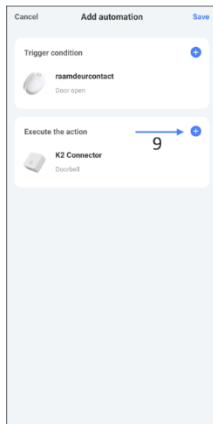
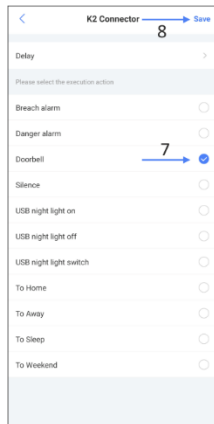
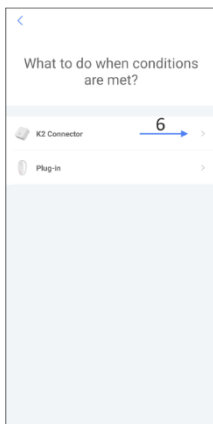
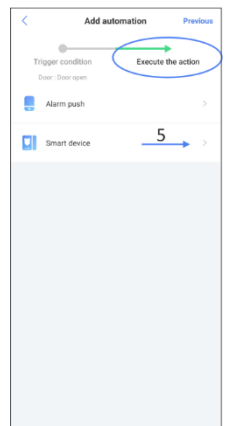
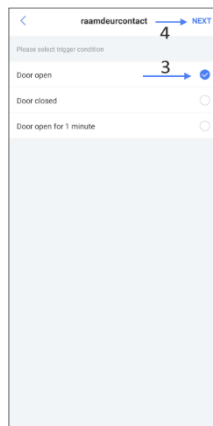
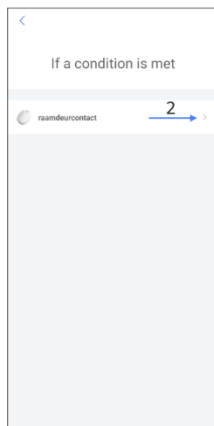
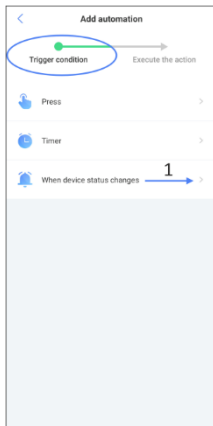
4.1 Create your own scene in the app

In the app, go to the Scenes page, there are 3 scenes available that cannot be deleted. You can also create your own scene by pressing the plus (+) and giving the new scene a name and colour, for example weekend orange.



4.2 Creating an automation

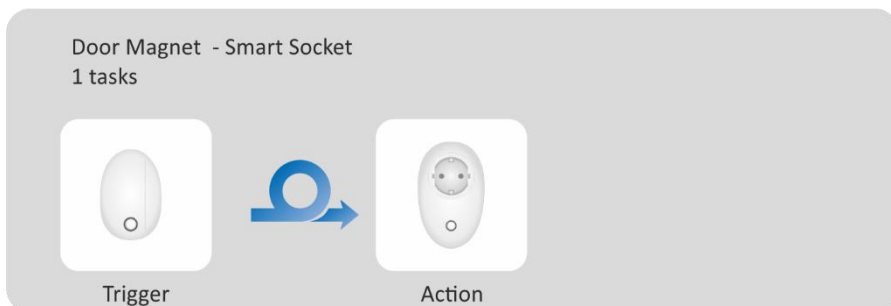
- Press the white dots of the orange weekend scene and then "Add automation". Follow the blue arrows and directions in the print screens, we will start with the "trigger" and then add 2 x an "action".
 - When this automation command is complete then after the window- door contact is opened, the K2 Connector will sound a doorbell signal and switch on the plug-in switch.
1. Select the "trigger" through which the action will be triggered. In this case, we select that the action will be executed when a device changes state.
 2. Select the window-door contact.
 3. Here we select that the action will be executed when the door is opened.
 4. Press next.
 5. In the next screen, we can choose the action that will be performed. In this case, we choose to activate one of the devices in the app.
 6. Choose the K2 connector.
 7. Select the doorbell sound.
 8. Press next.
 9. Add the second action to be performed when the contact is broken.
 10. Also choose to activate one of the devices in the app here.
 11. In this case, the plug-in switch is chosen.
 12. Select that the switch is switched on when the window-door contact is opened.
 13. Press "save" to record the second action.
 14. Press "save" again to record the automatic action.





Note:

If you want the plug-in switch to switch off again when the window-door contact is closed, you must create a new automatic command and set Door open to Door closed in the door-window contact setting (3), then set function (12) open to close in the plug-in switch.



Attention! The instructions described above "Creating an automation/automatic task" is only an example. Many different automatic actions can be created in the app.

4.3 Deleting a created scene in the app

Select 1 of the 3 non-removable scenes, then without releasing, press the scene you want to delete. A window will pop up and prompt you to delete the scene. In IOS/iPhone, press the line and swipe to the left.

4.4 Delete an automation

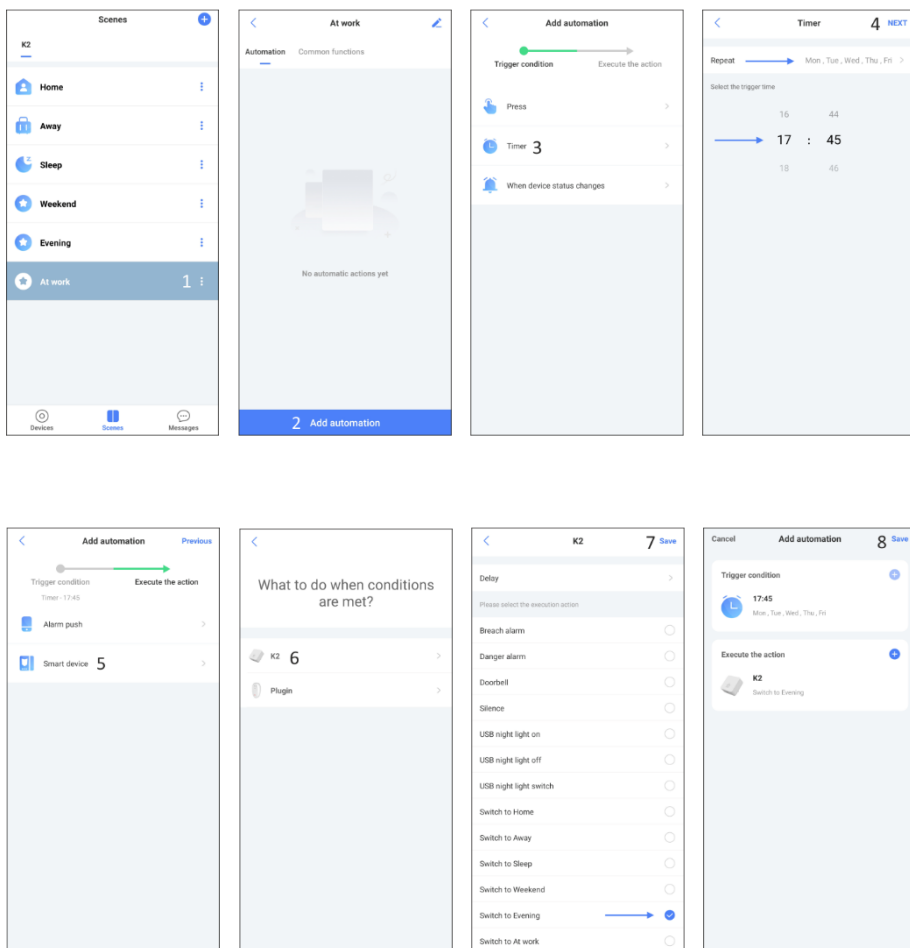
Without releasing, press the automation you want to delete. A window appears and asks you to delete the automation.

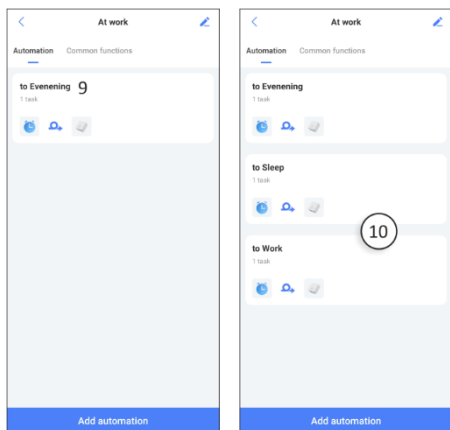
5. Automatic scene switching

The app can change scenes at times you programmed. I have created 2 additional scenes "At work" and "Evening". I want Monday to Friday at 17:45h to automatically switch to the Evening scene. Then at 23:45h automatically to the "Sleep" scene. And finally at 07:45h to "At work", the clock has come a full circle!

1. Press the white dots.
2. Press "Add automation".

3. Select the timer
4. Set the time and days press "Next".
5. Select "Smart device".
6. Select the K2 connector
7. Select "Switch to Evening" and press "Save".
8. Press "Save" to record the automatic action.
9. From Monday to Friday, the "At work" scene automatically switches to the "Evening" scene at 17:45h. Press the automatic action to give it a name.
10. Repeat steps 2 to 9 for "Sleep" and "At work".





6. Definitions & symbols

Scenes; by default there are 3 non-removable scenes, self-created scenes can be deleted.

Home scène



Away scène



Sleep scène



Self-created



Automation;

In a scene, you can create an automation that is executed when the condition is met. The condition is that if the status of the trigger changes, an action will follow.

Closed window-door contact



Trigger



Action

- In a normal situation, the window-door contact is closed.
- The status changes because the window-door contact is opened.
- The action that follows is that the plug-in switch switches on.



Devices; here you go directly to the app page with paired devices.



Scenes; here you go directly to the app page with the 3 default + the scenes you created yourself.



Notifications and device sharing; here you will find all actions performed with date and time, also the information with whom you share the app.



Timer on/off; you can set a timer per day or for a group of days, e.g. for the plug-in switch to switch on at 14:35 on Saturdays, Tuesdays and Fridays. But also, for example, to automatically switch scenes at set times.



Link on/off; allows you to link the action executing device to a trigger, e.g. the plug-in switch that switches on when the window-door contact is opened.



Account settings; here you will find your account setting and you can log out, the account is your e-mail address and password, see chap. 1



Settings; here you can delete your account, change the password and add users, among other things.



About; here you can update the app if necessary and find our company details.

7. Adding multiple users

It is possible to share your K2 Connector with your housemates, proceed as follows:

1. Create an account on a second smartphone as described in Chapter 1.
2. Go to the device list and select the K2.
3. Press "Settings" at the top right.
4. Press "Share connector" and then "Add user".
5. On the next screen, you can enter another user's e-mail address.
6. The other user receives an e-mail to be accepted.

Note:

The other user's access to the system is restricted.
Nothing can be removed or added to the app.

8. Room management

When adding ELRO Connects products to the app, they are placed in the living room by default. You can place them in a different room; go to the "All devices" page and select the device, press the pencil in the top right corner and again in the next window. It is also possible to change the names of the rooms and add additional rooms; go to the "All devices" page and press the three dots at the top right of the screen.

9. Resetting the K2 Connector

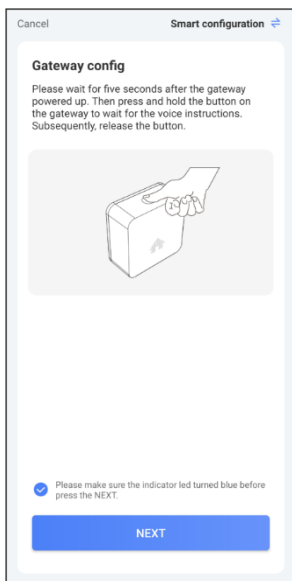
Using the procedure below, it is possible to reset the K2 Connector.

1. Insert the K2 Connector into a wall socket and wait 10 seconds.
2. Press the button of the K2 Connector three times quickly, the LED will flash green.
3. Press and hold the K2 Connector's button until the LED turns purple, release the button.
4. Reset is successful when you hear "Factory settings restored".

10. FAQ

Q: How can I install the K2 on a combined network?

A: This can be done with the "Mobile AP Configuration". You can select this method at the top right of the app during installation, follow the steps in the app. Default installation method is "Smart configuration".



Q: How do I delete an ELRO Connects product from the app?

A: Go to the "All devices" page, select the product you want to delete, press the pencil icon at the top right and then delete.

Q: How many ELRO Connects products can be connected to the K2?

A: 127

Q: Can I add multiple K2 Connectors to one account?

A: This is certainly possible! Each K2 Connector can have its own set of scenes and ELRO Connects products. There is no interconnection between the K2 Connectors.

Q: What is the wireless range?

A: 100m in an open space without obstacles or interfering signals. ELRO Connects products should be in range of each other for correct operation. The system is not a mesh network.

11. Specifications

Operating voltage	: 100-240VAC~50/60Hz
Standby power	: ≤ 2W
Wireless Protocols	: Wi-Fi (2.4G) & RF868MHz
Wireless Distance	: ≤100 metres (Open Area)
Alarm	: ≥75dBm @ 1meter
Operating Temperature	: -10°C~+50°C
Humidity	: ≤95%RH (non-condensing)



The WEEE symbol indicates that this product and batteries should be disposed of separately from household waste. When this product has reached the end of its service life, take it to a designated waste collection point nearby for safe disposal or recycling. Protect the environment and public health and handle natural resources responsibly!



By affixing the CE mark on a product, the manufacturer declares that the product meets all legal requirements for CE marking and may be sold throughout the EEA.

12. Service and contact

To ensure that we can provide our customers with the best possible service as quickly as possible, please consider the following:

- Many users have gone before you, all the questions they have asked are collected on our website under frequently asked questions (FAQ). Be sure to look at these, often your question is already answered there.
- For questions on the installation, use or operation of this product, go to www.elro.eu to get a quick answer to your question.
- Not getting anywhere with the website? Leave a question via the product page or send an e-mail to info@elro.eu we will help you as soon as possible.
- For the warranty conditions applicable to this product, please visit www.elro.eu